



STANDARD

ULTRA ENHANCE

CABINET RACK

儀器組合架

19"/23" Series Cabinet Rack

Standard Rack

Ex-Width Rack

Server Rack

Wall-Mount Rack/Open Rack

Console desk/TV Wall



儀器組合架 (Cabinet Rack)

JF儀器組合架系列是依據ANSI/EIA RS-310-C,D,E,F, 19吋/ETSI及IEC-297-3公制之標準規範製造，通過UL及CE，耐震測試MIL-STD-167認證，其鋁柱之圓弧造型，再於機架串聯時更能達到所需功能，且更易于組裝，特殊設計，可廣泛應用於監視機房、電子、電腦機房、通訊資訊、衛星地面站、捷運系統監視機房、電視台、CTI 語音查詢系統、自動控制系統、網路設備、數據機房、醫療器材、CO-LOCATION、IDC....

JF Rack Cabinet is professional for Intranet Office Networking system, Computer Supervising System, ISP and other telecommunication equipment. Compatible with ANSI / EIA RS-310C regulations, UL and CE approvals, also the MIL-STD-167 vibration test is compatible perfectly.

JF系列特點 (JF Feature)

機架前後可裝設壓克力門，鋁門，強化玻璃門或蜂巢式通風孔門，另側板可裝可拆式側板，或安裝開啓式門組，四面皆可拆卸以利機架之維修或多部機架串聯。

A choice of a perforated, tempered glass door or an acrylic door is available for both the front and rear of the rack.

機架之活動鋁柱：為可前後移動之方式，可因設備之把手，不同跳接線材之旋轉需求，而任意作無段式移動。

Flexible vertical rails can be set at the front or back of the rack to meet the actual terminal wiring needs.

為配合儀器架內線路使用空間，標準型機架，機箱寬度加寬至 (600mm)，加寬型機架加寬至 (800mm)，而內部活動鋁柱則維持19寬度不變，且兩者之活動鋁柱可依需求作前後及左右調整。

The 19" Standard rack has a width of 600 mm. For intranet office networking systems that need a larger size, the 800mm 19" Extra-wide rack is available. Both of the units maintain 19" standard size.

機架本身採組合式之鋁擠型鋁柱或實心直角三向接頭而成，其材質為AL6063T5，下方可加裝煞車輪及地平螺絲，上蓋板上加裝靜音風扇組，使內部設備達到真正循環作用，散熱快。

The main vertical rails of the rack are made with squeeze-cast aluminum pillars. The device can be set Castor or on a floor stand. Catch Nuts installed in the main vertical rails allow users to adjust the unit up or down according to the position of the rack-mount chassis. Top cover with fan unit to help the ventilation of equipment.

各門組皆附有隱藏式門鎖，前後門框開啓角度為115度，內部支架可內縮，採隔極處理或粉體烤漆。

A hidden key lock or combination lock is optional for the rack.

機架全部採熱硬化粉體塗裝以防設備刮傷、氧化，可抗強酸、強鹼，延長設備壽命或採靜電液塗裝烤漆。

This rack is powder coated to fight against rust, oxidation, scrapes, acids, alkali erosion, and lacquer peeling.

An acrylic front door with a lock and a 6-way socket strip with 30 set panel screws come standard.

機架前後門、側門及上、下框，外觀上均無螺絲、螺帽零件，整齊美觀。

機架之框架結構能承受1000公斤以上重量，不變形且不影響結構安全。

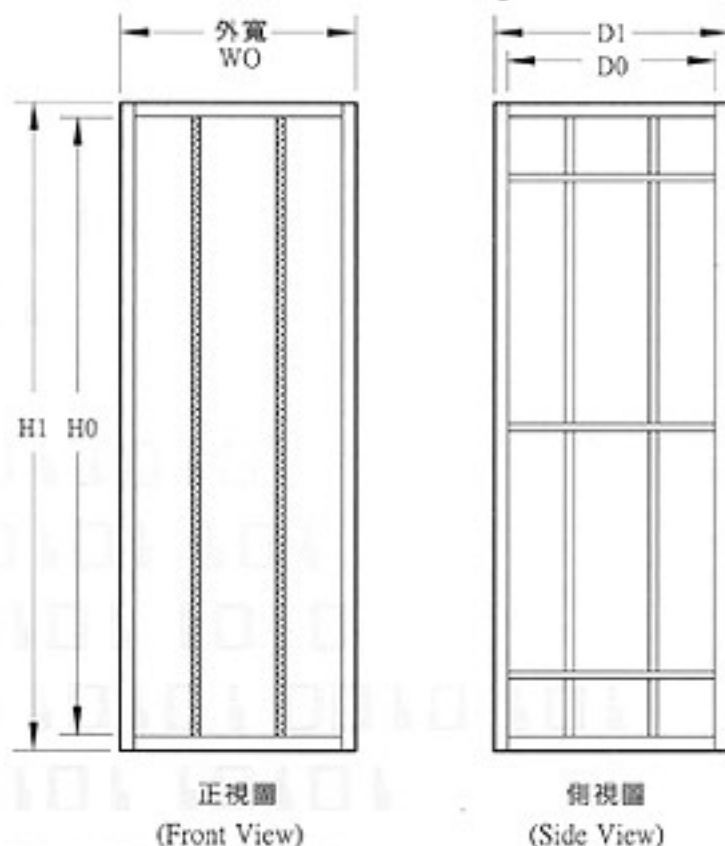
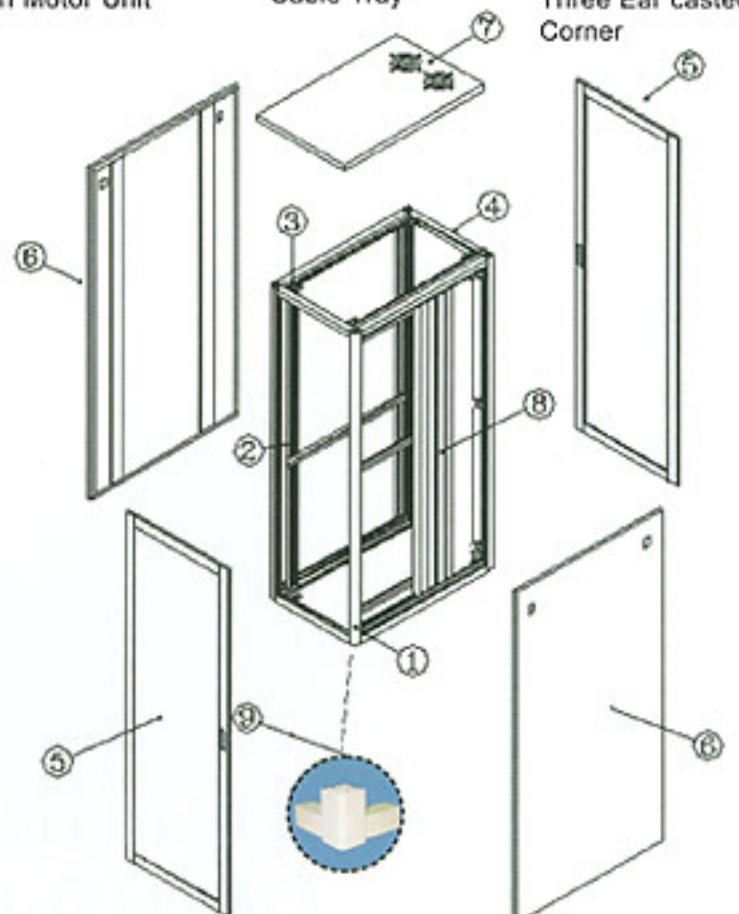
The side panel and door can be easily assembled and disassembled without any additional tools. The frame of both units can bear loads above 1000kgs and not bend out of shape.

所有符合ANSI/EIA規格均可安裝。

All accessories that meet ANSI /EIA RS-310-C standards can be used with the Jaunty-Fabricator 19" Cabinet Rack.

儀器組合架結構圖 (Cabinet Layout)

- | | | |
|-------------------------------|------------------------------|--------------------------------------|
| 1. 固定鋁柱
Main Vertical Rail | 2. 滑動鋁柱
Mounting Angle | 3. 活動支柱
Flexible Vertical Rail |
| 4. 上、下框
Top & Bottom Frame | 5. 前、後門
Front & Rear Door | 6. 側板
Side Panel |
| 7. 風扇組
Fan Motor Unit | 8. 理線盤
Cable Tray | 9. 直角三向接頭
Three Ear casted Corner |



19吋標準型儀器組合架

(19" Standard Cabinet Rack)



19吋(外寬600)及23吋(外寬700) 規格尺寸 19" (WO=600) & 23" (WO=700) Standard Size

(Standard Size)規格 / 尺寸	H0/內高	H1/外高	D0/內深	D1/外深
JF-15-615	667	747	529	615
JF-20-615	889	969	529	615
JF-25-615	1111	1191	529	615
JF-30-615	1334	1414	529	615
JF-35-615	1556	1636	529	615
JF-41-615	1822	1902	529	615
JF-15-750	667	747	664	750
JF-20-750	889	969	664	750
JF-25-750	1111	1191	664	750
JF-30-750	1334	1414	664	750
JF-35-750	1556	1636	664	750
JF-41-750	1822	1902	664	750
JF-15-900	667	747	814	900
JF-20-900	889	969	814	900
JF-25-900	1111	1191	814	900
JF-30-900	1334	1414	814	900
JF-35-900	1556	1636	814	900
JF-41-900	1822	1902	814	900
JF-41-1000	1822	1902	914	1000
JF-41-1100	1822	1902	1014	1100
JF-42-1000	1867	1947	914	1000
JF-42-1100	1867	1947	1014	1100
JF-42-900	1867	1947	814	900

1U=1.75英寸(inch)=44.45mm 外高不含輪高
(H1 Without Caster Height)

19吋標準型儀器組合架範例

(Example for 19" Cabinet application)



600對電話
端子上架

CO-LOCATION



SERVER主機
COMPAQ SERVER



CO-LOCATION



SERVER主機
HP SERVER





銘傳電視牆及監控台



電漿電視牆



多媒體副控桌



醫療器具



關貿電視牆



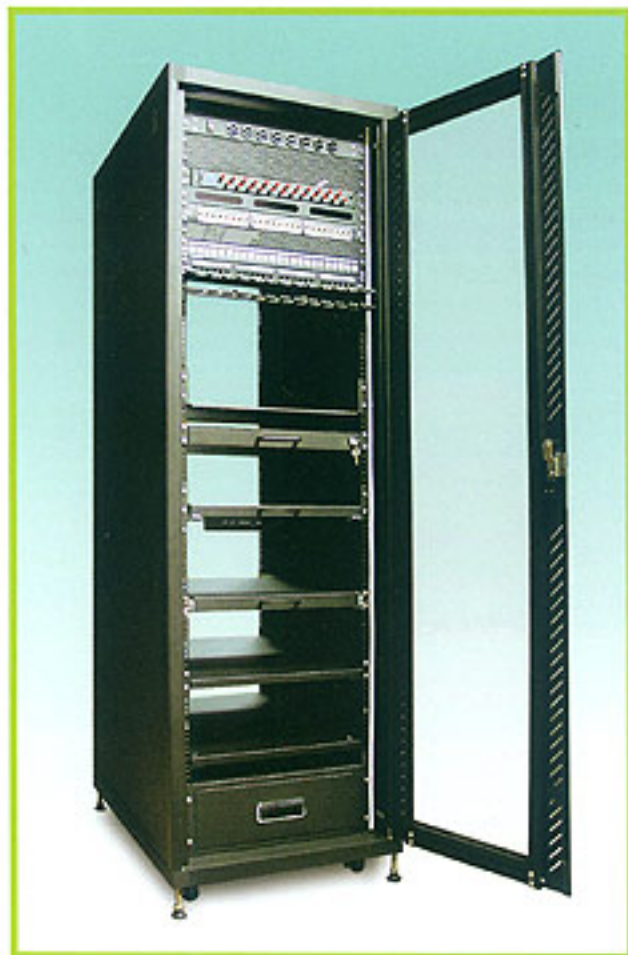
關貿特殊機架

19" Server Rack

19吋網路型SERVER用儀器組合架

(19" Server Rack)

* For IBM、COMPAQ、HP、DELL、SUN SERVER均可上架。



19吋SERVER儀器組合架規格

(Standard Size for 19" Server Rack)

SERVER型規格尺寸(外寬W=600mm)

(Standard Size)規格 / 尺寸	H0/內高	H1/外高	D0/內深	D1/外深
SJF-15-615	667	747	529	615
SJF-20-615	889	969	529	615
SJF-25-615	1111	1191	529	615
SJF-30-615	1334	1414	529	615
SJF-35-615	1556	1636	529	615
SJF-41-615	1822	1902	529	615
SJF-15-750	667	747	664	750
SJF-20-750	886	966	664	750
SJF-25-750	1111	1191	664	750
SJF-30-750	1334	1414	664	750
SJF-35-750	1556	1636	664	750
SJF-41-750	1822	1902	664	750
SJF-15-900	667	747	814	900
SJF-20-900	889	969	814	900
SJF-25-900	1111	1191	814	900
SJF-30-900	1334	1414	814	900
SJF-35-900	1556	1636	814	900
SJF-41-900	1822	1902	814	900
SJF-41-1000	1822	1902	914	1000
SJF-41-1100	1822	1902	1014	1100
SJF-42-1000	1867	1947	914	1000
SJF-42-1100	1867	1947	1014	1100
SJF-42-900	1867	1947	814	900

* 為黑白色烤漆 1U=1.75英寸(inch)=44.45mm 外高不含輪高
* W/Black&White finish (H1 Without Caster Height)

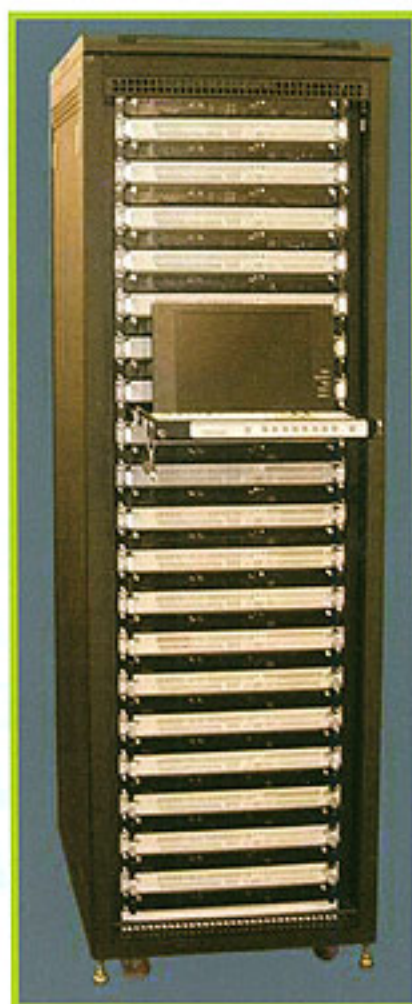
19吋SERVER儀器組合架範例

(Example for Server Rack application)

各種廠牌最新SERVER均可上架



中華電信主機



SERVER 主機



SERVER 主機
SUN SERVER



19" Ex-Width Cabinet Rack

19吋加寬型儀器組合架範例

(Example for 19" Ex-Width Cabinet Rack application)

垂直線槽配線實例



衛星機房



配線實例



配線實例

加寬型儀器組合架

(19" Ex-Width Cabinet Rack)



加寬型儀器組合架規格

(Stand Size for 19" Ex-Width Cabinet Rack)

加寬型規格尺寸(外寬W=800mm)

(Standard Size) 規格 / 尺寸	H0/內高	H1/外高	D0/內深	D1/外深
WJF-35-60	1556	1636	529	615
WJF-41-60	1822	1902	529	615
WJF-30-75	1334	1414	664	750
WJF-35-75	1556	1636	664	750
WJF-41-75	1822	1902	664	750
WJF-35-90	1556	1636	814	900
WJF-41-90	1822	1902	814	900

1U=1.75英寸(inch)=44.45mm

外高不含輪高

(H1 Without Caster Height)

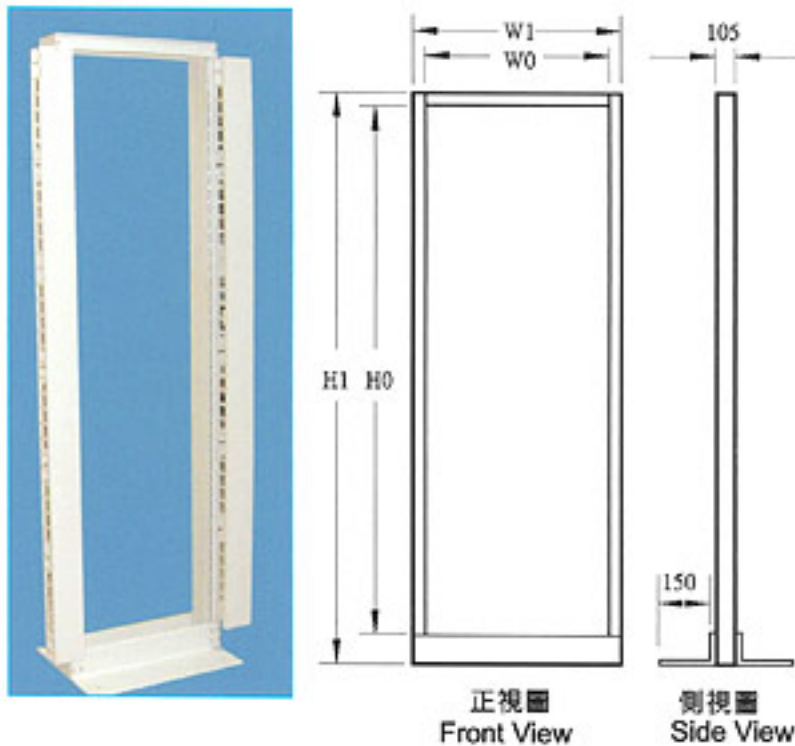
19" Open Rack/Wall-Mount Rack

19"及23"開放型儀器組合架

(19" & 23" Open Rack)

19"及23"開放式機架是依據ANSI/EIA RS-310-C、IEC-297-3、19"/ETSI/公制標準規範製造，廣泛用於交換機、自動化\廠房、實驗中心、網路開放系統。通過UL、CE、MIL-STD-167 JF open rack series are special designed for data transfer, automatic equipment, factory network system, and telecommunication sys. , experiment center etc. And it meets the ANSI/EIA RS-310-C, IEC-297-3, 19" ETSI criterions. Also meet the UL, CE, MIL-STD-167 standard.

主要材質及配備：結構鋁柱及L型底板、面板螺絲、上框。
(Material & equipment): Vertical rail, L shaped bottom, panel screw, Top Frame.



19"及23"開放型儀器組合架實例

(Example for 19" & 23" Open Rack application)



19"壁掛式機箱

(19" Wall-Mount Rack)

符合ANSI/EIA RS-310-C、IEC-297-3、19"/ETSI/公制之標準規範製造，採不落地方式，可依現場環境做適當的調整，適用於各級教育單位網路系統、OA辦公系統、自動化工廠、微細胞基地台及其他配線檢查轉接點。通過UL、CE、MIL-STD-167

JF wall-mount rack was special designed for mounting electronic equipment and components. Also with a security cover for rack. Meet the ANSI/EIA RS-310C, IEC-297-3, 19" ETSI criterions.

主要材質及配備：結構鋁柱、鋁板、壓克力門板加鎖、電源排插、散熱風扇、面板螺絲、掛壁組件。
Material & equipment: Vertical rail, Acrylic door with lock, socket strip, Fan, panel screw



19"壁掛型儀器組合架規格

(Standard Size for 19" Wall-Mount Rack)

(Standard Size) 規格/尺寸	H0/內高	H1/外高	D1/外深	W01/外	
WAL 0650	266.7	303	500	517	6U
WAL 0850	355.6	392	500	517	8U
WAL 1050	444.5	481	500	517	10U
WAL 1250	533.4	572	500	517	12U
WAL 1550	666.7	703	500	517	15U

19"及23"開放型儀器組合架規格

(Standard Size Open Rack)

型號	內高	外高	內寬	外寬	單位
MODEL No.	H0(MM)	H1(MM)	W0(MM)	W1(MM)	UNIT
KDO15	667	812	450	534	15U
KDO30	1334	1479	450	534	30U
KDO35	1556	1701	450	534	35U
KDO41	1823	1968	450	534	41U
KDO45(7')	2000	2145	450	534	45U
KDO58(9')	2578	2723	450	534	58U
KDO76(11'6")	3378	3523	450	534	76U

Accessories of 19" Cabinet Rack

19吋組合架附屬配件

1U 軌跡球式鍵盤盒
1U Trackball KB-Drawer



1U 觸控式鍵盤盒
1U Touchpad KB-Drawer



1U 8Port 電腦切換器
1U 8Port KVM Switch



4U 抽屜
4U Box Drawer



15" LCD 電腦螢幕置放箱
15" LCD Chassis



上抽式風扇
Top Cover W/Fan



1U 散熱風扇組 (6 Fan/
9Fan)
1U Cooling Fan Set



3U 前/後置並用型風扇組
3U AC Fan Motor Unit



6孔排插 (塑膠)
6-way Power Strip



彈片螺母
Catch Nut



8孔/10孔排插 (110V/220V)
8-way / 10-way Power Strip



11U 溫控機箱
1U Temperature Sensor



空白面板(1-6U)
Blank Panel



1U Server 支架支撐板
1U Fixed Shelf



1U L型支架支撐板
1U Support Plate Set



1U 抽拉板
1U Plate Drawer



2U 抽拉板
2U Plate Drawer



2U 承板
2U Plate



1U 水平理線架
1U Level Cable Duct



直角連接件
Baying Kit



理線盤
Cable Tray



1U 走線面板
1U Cable Collector Panel



安定腳
Anchor



垂直理線槽
Vertical Cable Duct

